

INSTALLATION INSTRUCTIONS

PART NO. 13-252BT/13-252BTBK

BLUETOOTH STEREO SYSTEM

10/30/2019

FITMENT: CAN AM RYKER-2019-NEWER

TOOLS NEEDED:

PUSH PIN PLIERS/ FLAT
HEAD SCREW DRIVER

T20 TORX

WIRE TIES

RUBBING ALCOHOL

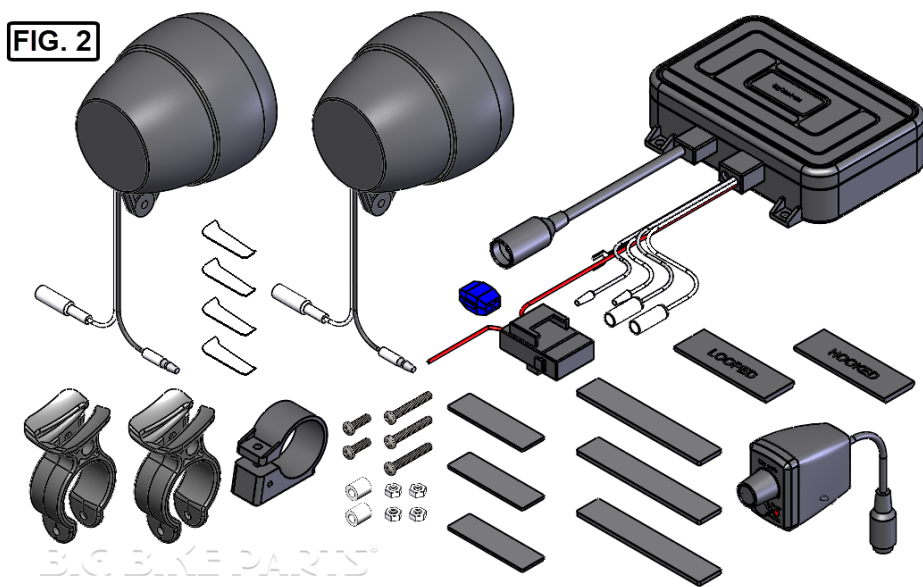
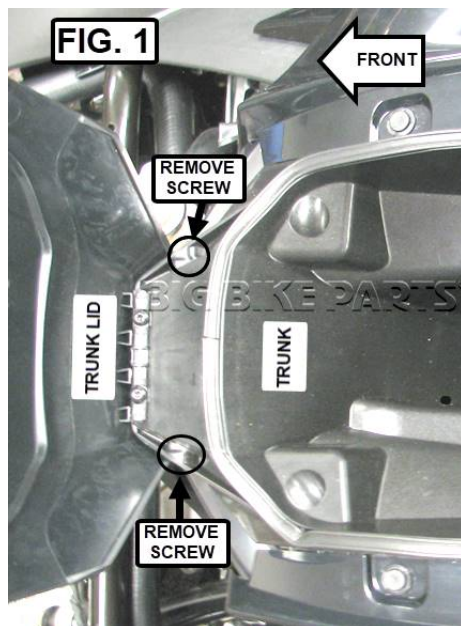
LINT FREE TOWEL

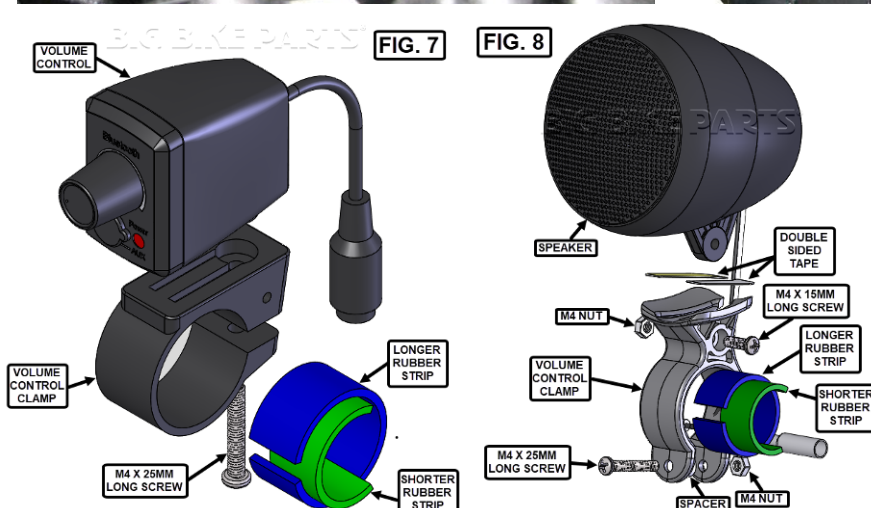
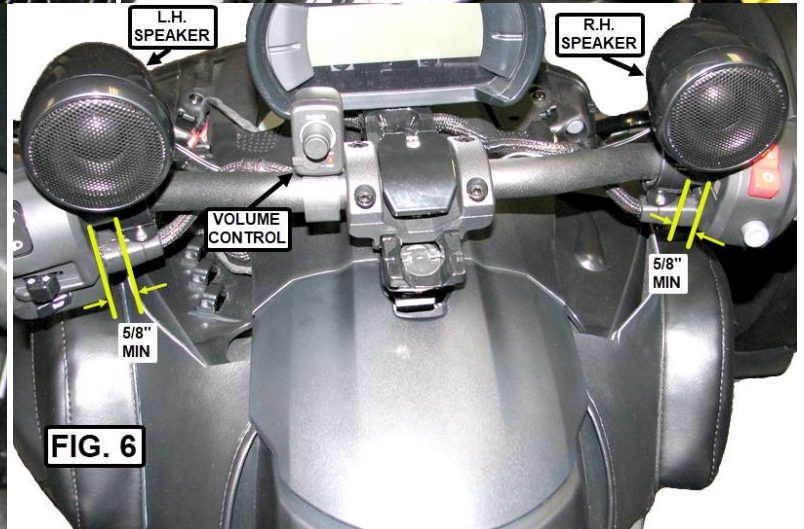
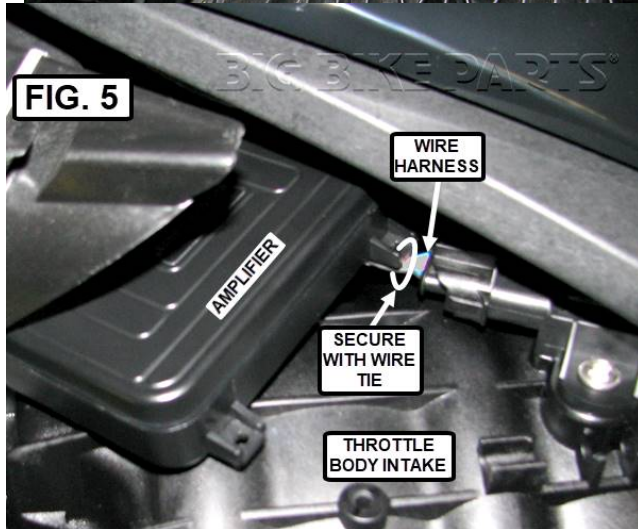
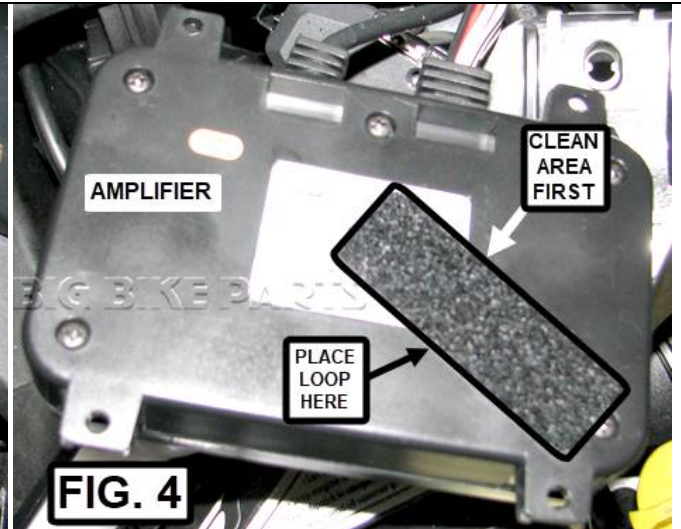
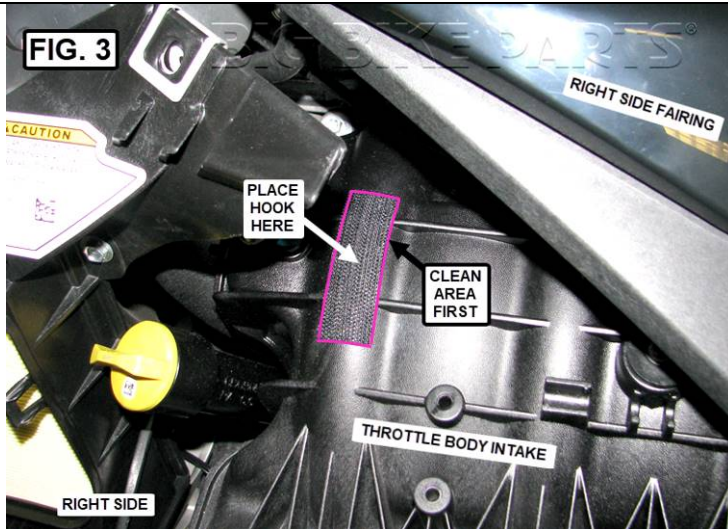
PLEASE READ THROUGH AND UNDERSTAND THESE INSTRUCTIONS BEFORE BEGINNING.

ESTIMATED INSTALLATION TIME: 30 TO 45 MIN.

INSTALLATION:

1. OPEN THE FUEL TANK COVER AND REMOVE THE FOUR PUSH PINS.
2. OPEN THE TRUNK LID AND REMOVE THE FOUR PUSH PINS.
3. GENTLY PULL UP ON THE LOWER FRONT CORNER OF THE LEFT SIDE FAIRING TO RELEASE IT FROM THE CLIP. PULL THE LEFT SIDE FAIRING STRAIGHT OUT TO REMOVE IT. (REPEAT ON RIGHT SIDE FAIRING)
4. USING A T20 TORX, REMOVE THE TWO SCREWS ON THE FRONT OF THE TRUNK (FIG. 1).
5. RELEASE THE TABS HOLDING THE UPPER FAIRING IN PLACE.
6. LIFT THE TRUNK UP AND FORWARD TO REMOVE IT (UNPLUG TWO WIRES ON THE BACK OF THE POWER OUTLET BEFORE REMOVING COMPLETELY).
7. OPEN THE THROTTLE BODY AIR INTAKE ON THE RIGHT SIDE.
8. USING FIG 2 FOR REFERENCE, FIND THE PARTS NEEDED FROM THE STEREO KIT FOR THIS INSTALL.
9. CLEAN THE AREA ON THE THROTTLE BODY INTAKE (FIG. 3) AND THE BACK OF THE AMPLIFIER (FIG. 4) WITH RUBBING ALCOHOL. LET DRY COMPLETELY.
10. PEEL THE BACKER FROM THE HOOK SIDE OF THE HOOK AND LOOP SUPPLIED IN THE KIT AND PLACE IT ON THE THROTTLE BODY INTAKE ACCORDING TO FIG. 3.
11. PEEL THE BACKER FROM THE HOOK AND PLACE IT ON THE AMPLIFIER AS SHOWN IN FIG. 4 PRESSING FIRMLY IN PLACE (BE SURE ENTIRE BACKER ON BOTH HOOK AND LOOP ARE STUCK IN PLACE).
12. INSTALL AMPLIFIER AND USE A WIRE TIE TO SECURE THE FRONT CORNER TO THE WIRE HARNESS ABOVE THE THROTTLE BODY INTAKE (FIG. 5).
13. USING FIG. 6 & 7 AS REFERENCE, INSTALL THE VOLUME CONTROL CLAMP ON THE HANDLEBAR AND SECURE THE VOLUME KNOB.
14. USING FIG. 6 & 8 AS REFERENCE, INSTALL THE TWO SPEAKERS ON THE HANDLEBARS IN THE DESIRED LOCATION. (LEAVE A 5/8" MIN. GAP BETWEEN THE SPEAKER CLAMP AND THE HANDLEBAR CONTROLS).
15. REFERENCE FIG. 9 TO CONNECT THE AMPLIFIER TO THE SPEAKERS, VOLUME CONTROL, AND BATTERY.
16. REPEAT STEPS 1 THROUGH 7 IN REVERS ORDER.





NOTICE

**THIS SET CONTAINS EXTRA
HARDWARE ITEMS THAT WILL
NOT BE USED FOR THIS
INSTALLATION**

NOTICE

**IGNORING THE CONTENTS OF THESE
INSTRUCTIONS MAY AFFECT THE PRODUCT
PERFORMANCE AND FUNCTIONALITY. NOT
FOLLOWING THESE INSTRUCTION MAY CAUSE
DAMAGE TO THE PRODUCT OR THE VEHICLE
TO WHICH IT IS BEING ATTACHED.**