

# BIG BIKE PARTS® INSTALLATION INSTRUCTIONS

Copyright© 2007 by Big Bike Parts, Inc. No part of this instruction sheet may be reproduced without the written permission of Big Bike Parts, Inc.

PART NO. 2-488

TOUR FLOORBOARD KIT  
GOLDWING GL1500

Revised 9/4/14

TOOLS NEEDED:	3MM ALLEN WRENCH	5MM ALLEN WRENCH	6MM ALLEN WRENCH	8MM ALLEN WRENCH
	8MM WRENCH	10MM WRENCH	11MM WRENCH	13MM WRENCH
	13MM SOCKET WRENCH WITH EXTENSION		PHILLIPS SCREWDRIVER	

## HARDWARE INCLUDED:

(2) WEAR SPACER	(2) 1/4-20 X 1/2" LONG SOCKET HEAD CAP SCREW
(5) M8-1.25 X 35MM LONG SOCKET HEAD CAP SCREW	(1) M6-1.0 X 10MM LONG HEX HEAD CAP SCREW
(2) M8-1.25 X 25MM LONG BUTTON SOCKET HEAD CAP SCREW	(4) M6-1.0 X 20MM LONG SOCKET HEAD CAP SCREW
(1) M6-1.0 X 6MM SOCKET HEAD SET SCREW	(4) 1/4-20 NYLOC HEX NUT (2) M8-1.25 NYLOC NEX NUT
(4) 1/4-20 X 1" LONG SOCKET HEAD CAP SCREW	(2) M12-1.75 X 20MM LONG FLAT SOCKET HEAD CAP SCREW
(2) M8-1.25 X 20MM LONG BUTTON SOCKET HEAD CAP SCREW	(2) M6-1.0 X 16MM CUP POINT SOCKET HEAD SET SCREW
(1) M6 FLAT WASHER (1) THIN WASHER	(3) M8 LOCK WASHER

**NOTE: PLEASE READ THROUGH ALL THE INSTRUCTIONS BEFORE YOU START INSTALLATION.**

**NOTE: FLOORBOARDS ARE DESIGNED TO TUCK IN CLOSELY TO THE FRAME HOWEVER BE AWARE THAT THE USE OF FLOORBOARDS BY THEIR NATURE WILL REDUCE CORNERING CLEARANCE. RIDING STYLE AND SUSPENSION SHOULD BE MODIFIED ACCORDINGLY.**

1. PLACE BIKE FIRMLY ON ITS CENTER STAND.
2. REMOVE THE LEFT AND RIGHT BATTERY SIDE COVERS, ENGINE COVERS NEAR DRIVERS' KNEES, AND THE RUBBER COVERS THAT FIT AROUND THE CASE GUARD ENTERING ON THE BOTTOM OF THE BIKE.
3. REMOVE THE COVER ON THE BOTTOM OF THE RIGHT SIDE PASSENGER FLOORBOARD MOUNT USING A PHILLIPS SCREWDRIVER. SLIDE THE METAL BRACKET AT THE BASE OF THE PASSENGER BOARD OUTWARD AND RAISE THE PROTECTIVE RUBBER BOOT. THIS WILL ALLOW YOU TO GAIN ACCESS TO THE TWO SCREWS HOLDING THE CHROME COVER UNDER THE RIGHT SIDE BATTERY COVER; ROTATE THE CHROME COVER UPWARDS OUT OF THE WAY. THIS WILL GIVE YOU BETTER ACCESS TO THE BRAKE PEDAL.
4. REMOVE THE RIGHT, REAR, LOWER PANEL THAT COVERS THE EXHAUST USING AN 8 MM SOCKET WRENCH.
5. REMOVE THE LEFT AND RIGHT FOOT PEGS (PLIERS), THE BRAKE PEDAL (12 MM WRENCH) AND THE SHIFTER LEVER (8 MM SOCKET WRENCH). THESE WILL NOT BE RE-INSTALLED.
6. USING A 12 MM SOCKET REMOVE THE REAR LOWER BOLT HOLDING THE ENGINE CASE GUARDS TO THE FRAME ON THE LEFT AND RIGHT SIDES OF THE BIKE. THIS BOLT WILL NOT BE REUSED.
7. INSTALL THE NEW LEFT AND RIGHT MOUNTING LUGS (1A) PROVIDED INTO THE FOOT PEG MOUNTS USING A M8 X 35 MM SOCKET HEAD CAP SCREW (1B) AND A LOCK WASHER (1C) PROVIDED (SEE FIGURE #1). THE "L" WILL FACE UPWARD AND THE "R" WILL FACE DOWNWARD. HAND TIGHTEN ONLY AT THIS TIME. NOTE: THESE LUGS ARE MARKED "L" AND "R" FOR MOUNTING ON THE CORRECT SIDE AND THE CAP SCREW MUST BE INSERTED FROM THE TOP SIDE.
8. INSTALL THE NEW BRAKE PEDAL (2A) PROVIDED ONTO THE STOCK SHAFT. THE SHAFT MAY SLIDE INWARDS WHEN INSTALLING AND WILL NEED TO BE PUSHED OUTWARD AT THE SAME TIME AS PUSHING INWARD ON THE BRAKE PEDAL. THE SCREW (2B) AND WASHER (2C) PROVIDED NEED TO BE REMOVED FOR INSTALLATION AND INSERTED FROM THE REAR OF THE BIKE (SEE FIGURE #2). NOTE: MOUNTING THE BRAKE PEDAL TOO LOW MAY PREVENT SUFFICIENT BRAKE PRESSURE BEING APPLIED DURING BRAKING. THE PEDAL NEEDS TO BE POSITIONED SO IT WILL BE 2 1/2" - 3" ABOVE THE FLOORBOARD. THIS CONSTITUTES TO A 13 1/4" - 14 3/4" HEIGHT FROM THE FLOOR TO THE BRAKE PEDAL WHILE THE BIKE IS ON THE CENTER STAND. THIS DIMENSION WILL VARY FROM BIKE TO BIKE DEPENDING ON MODEL, SUSPENSION, ETC. THE BRAKE PEDAL MAY NEED ADJUSTMENT AFTER THE FLOORBOARDS ARE INSTALLED.
9. INSTALL THE SHIFTER BELL CRANK (3A) ONTO THE STOCK SHIFTER SHAFT USING THE SET SCREW (3B) PROVIDED AND A 3 MM ALLEN WRENCH (SEE FIGURE #3). POSITION THE BELL CRANK SO THE CENTER LINE IS ROTATED TOWARDS THE BACK OF THE BIKE 30° (SEE FIGURE #3).

10. ATTACH THE MOUNT TO THE FRAME USING THE M8 X 35 MM SOCKET HEAD CAP SCREW (4J). THE SCREW WILL BE INSERTED WHERE THE OEM SCREW WAS REMOVED IN STEP #6. THE SCREW WILL GO THROUGH THE MOUNT AND THE CASE GUARD. NOTE: USE AN ALLEN WRENCH SOCKET ON AN EXTENSION TO START THE SCREW BY HAND TO ENSURE THAT YOU DO NOT STRIP THE THREADS OUT OF THE FRAME.
11. INSERT THE M12-1.75 FLAT HEAD SCREW (4D) IN THE REAR OF THE FLOORBOARD MOUNT (4A) AND THREAD IT INTO THE MOUNTING LUGS INSTALLED IN STEP #7. TIGHTEN FIRST THE M8 X 35 MM SOCKET HEAD CAP SCREW (A1) ON THE MOUNTING LUG WITH A 6 MM ALLEN WRENCH, THEN THE M8 X 80 MM (4C) HEX HEAD CAP SCREW WITH THE 13 MM SOCKET OR THE M8 X 35 SOCKET HEAD CAP SCREW WITH A 6 MM ALLEN WRENCH AND THEN THE M12-1.75 FLAT SCREW (4D) USING AND 8 MM ALLEN WRENCH. INSERT THE TUBE CAP (4E).
12. INSTALL THE U-CLAMP HANGERS (4F) OVER THE ENGINE CASE GUARD AND UNDER THE FRONT OF THE FLOORBOARD BRACKET (SEE FIGURE #4). THE TOP BRACKET WILL HAVE A SET SCREW HOLE(S) AND AN ANGLE SURFACE THAT FACES OUTWARD. MAKE SURE THE CLAMPS ARE POSITIONED AS FAR FROM THE BIKE AS POSSIBLE AND SECURE USING THE M6 SOCKET HEAD CAP SCREWS (4G) AND A 5MM ALLEN WRENCH. INSERT AND TIGHTEN THE M6 SET SCREWS (4H) TO PREVENT THE CLAMP FROM MOVING.
13. INSTALL BOTH HEEL/TOE PADS (5A) ONTO THE SHIFT LEVER ASSEMBLY (5B) USING THE M8 SOCKET HEAD CAP SCREWS (5C) AND A 6 MM ALLEN WRENCH (SEE FIGURE #5). THEN INSTALL THE SHIFTER LEVER ASSEMBLY (5B) INTO THE LEFT FLOORBOARD MOUNT BRASS BUSHING AND SECURE IT IN PLACE WITH THE THIN WASHER (5D), LINKAGE BRACKET (5E), FLAT WASHER (5F), AND M6 BOLT (5G) USING A 10 MM WRENCH.
14. REMOVE ONE ROD END FROM THE SHIFT LINKAGE (6A) AND SLIDE THE LINKAGE COVER (6B) ONTO THE SHAFT (SEE FIGURE #6). RE-ASSEMBLE THE SHIFT LINKAGE LEAVING THE JAM NUTS LOOSE. CONNECT THE LINKAGE TO THE BELL CRANK (3A) AND LINKAGE BRACKET (5E) USING M8 SOCKET HEAD CAP SCREWS (5H) USING A 5 MM ALLEN WRENCH AND M8 LOCK NUTS (5J) WITH A 13 MM WRENCH.
15. INSTALL THE LEFT AND RIGHT FLOORBOARDS ONTO THE MOUNTS USING THE ¼" X 1" SOCKET HEAD CAP SCREWS (SEE FIGURE #7). THE NYLOC NUT WILL BE INSERTED IN FROM THE BOTTOM OF THE BOARD INTO THE CAST OPENING THAT IS THE SAME SIZE AS THE NUT. TIGHTEN WITH A 5 MM ALLEN WRENCH. NOTE: TIGHTEN THE BOARDS SUCH THAT THEY CAN PIVOT BUT ONLY WHEN PRESSURE IS APPLIED.
16. ADJUST THE LINKAGE UNTIL THE SHIFT LEVER ASSEMBLY IS LEVEL AND IS FULLY FUNCTIONING. TIGHTEN THE JAM NUTS USING A 12 MM WRENCH. SLIDE THE RUBBER LINKAGE COVER UP OVER THE ROD END.
17. BEFORE RIDING CHECK THE OPERATION OF THE HEEL-TOE SHIFTER AND THE BRAKE PEDAL. MAKE SURE BOTH ITEMS ARE FULLY FUNCTIONING. IF NECESSARY MAKE ANY NEEDED ADJUSTMENTS.
18. REINSTALL ALL COVERS AND ITEMS REMOVED FOR ASSEMBLY.

**NOTE: PRACTICE RIDING SESSIONS SHOULD BE UNDERTAKEN IN A SAFE ENVIRONMENT TO GET USED TO YOUR NEW FLOORBOARDS AND TO ENSURE PROPER POSITIONS OF THE SHIFTER AND BRAKE PEDAL. MAKE ANY FINAL ADJUSTMENTS AS NECESSARY AND CHECK ALL FASTENERS FOR TIGHTNESS.**

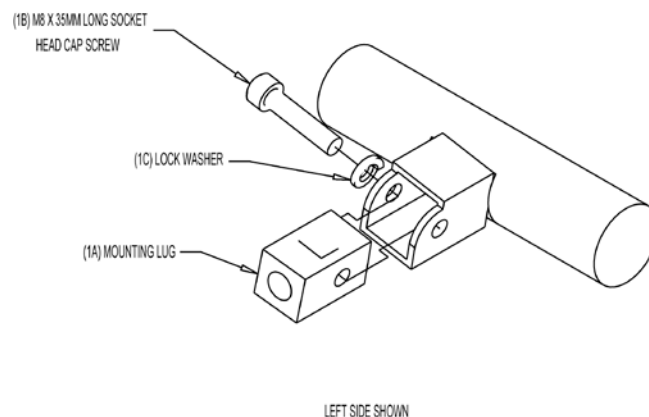


FIGURE #1

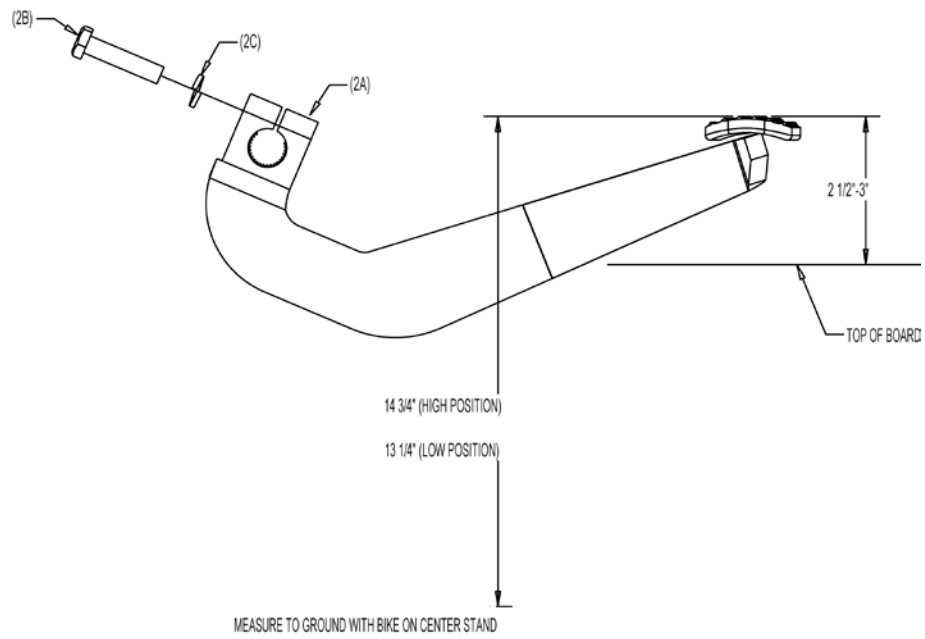


FIGURE #2

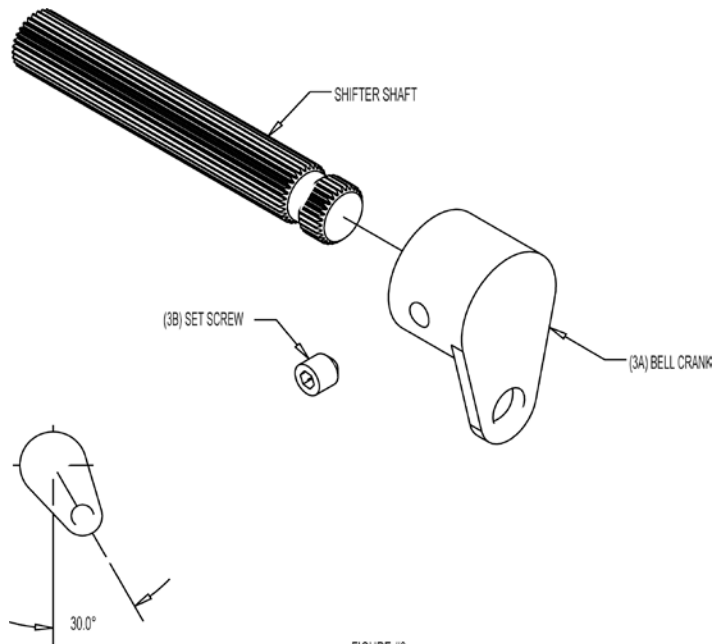
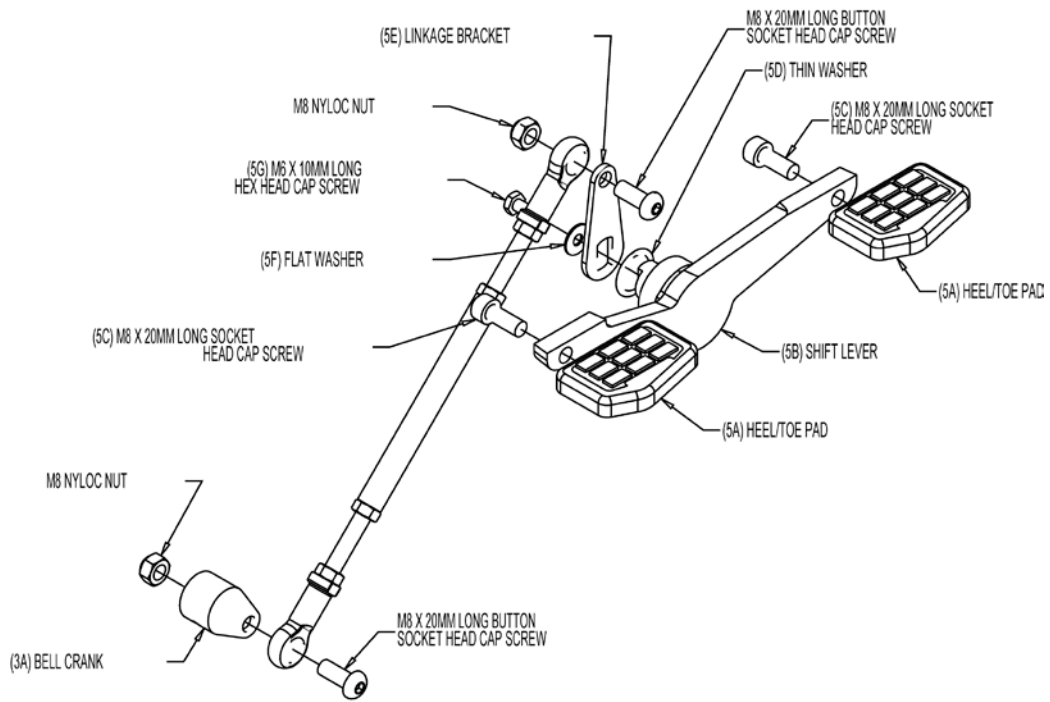
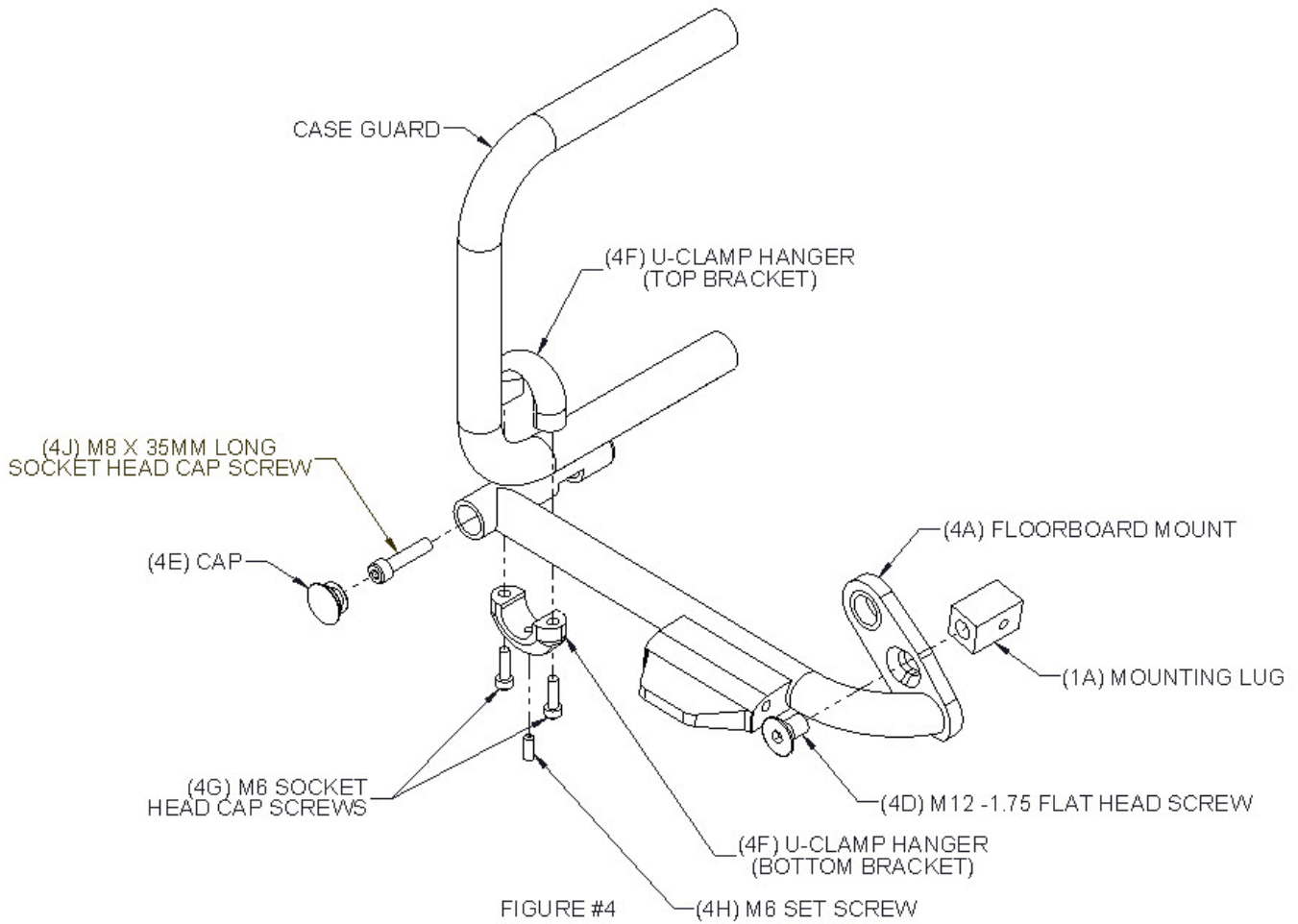


FIGURE #3



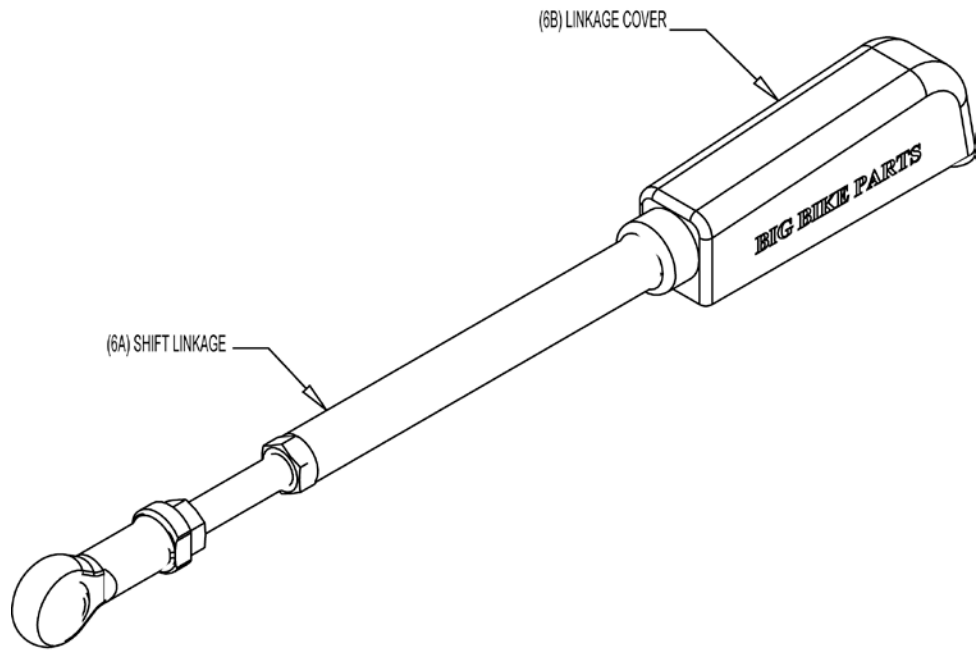


FIGURE #6

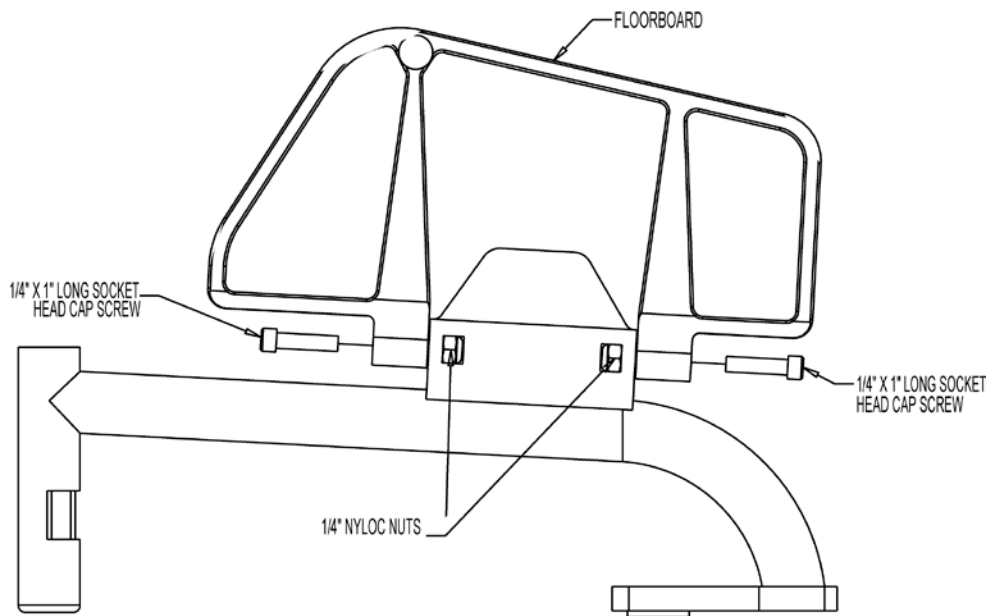


FIGURE #7